

EURO-CYL

180 to 230 Liters

Premium cryogenic transportable and storage cylinders ideal for liquid nitrogen, oxygen, argon, carbon dioxide and nitrous oxide.

USER FRIENDLY CYLINDERS

Easy to Use

- Ideal for transportable or stationary gas supply
- Automatic pressure building and gas economizer systems
- All valves and instruments within easy reach and visibility
- Stable low center of gravity

Superior Performance

- Rugged, maneuverable and fast filling
- Gas and/or liquid withdrawal
- Continuous flow rates up to 10,5 Nm³/h

Cost Effective

- Super-insulation provides long holding time and low Nominal Evaporation Rate
- All stainless steel vessels and patented inner support system for durability and long life
- Heavy-duty footring and large diameter handling ring with four supports



5-year
vacuum
warranty



Liquid Cylinder Control Manifold (LCCM) Regulator

Dual function regulator controls pressure building and gas economizing

Eliminates copper piping and fittings

Easy to set and adjust pressure-control knob



Chart Industries Group D&S

Chart Ferox, a.s. • Ústecká 30 • CZ-405 30 • Děčín 5
Tel.: +420-412-507 343 • Fax: +420-412-507 297
EN/400001/22AUG/2011 © Chart Ferox, a.s. All Rights Reserved

ferox-sales@chart-ind.com
www.chart-ferox.com

Type		180 / 24	230 / 22 SB*
Capacity			
Liquid (gross)	(liters)	196	240
Liquid (net)	(liters)	186	228
Gas (N ₂)**	(Nm ³)	98	120
Gas (O ₂)**	(Nm ³)	126	154
Gas (Ar)**	(Nm ³)	123	151
Gas (CO ₂)**	(Nm ³)	104	128
Gas (N ₂ O)**	(Nm ³)	96	118
Performance			
NER*** (N ₂)	(% per day)	1,9	1,8
NER (O ₂ - AR)	(% per day)	1,3	1,2
NER (CO ₂ - N ₂ O)	(% per day)	0,5	0,5
Gas Flow (N ₂ , O ₂)	(Nm ³ /hr)	9,2	10,5
Gas Flow (CO ₂ or N ₂ O)	(Nm ³ /hr)	2,9	2,9
Relief Valve Setting	(bar)	24	22
Code		TPED (EN1251)	TPED (EN1251)
Dimensions			
Tank Diameter	(mm)	508	660
Base Type		footring	mini-pallet square base
Base Size	(mm)	508	715x715
Height	(mm)	1622	1389
Empty Weight	(kg)	135	189
Maximum Full Weight****			
	N ₂ (kg)	285	373
	O ₂ (kg)	347	449
	Ar (kg)	394	507
	CO ₂ (kg)	354	458
	N ₂ O (kg)	331	429

* Option: Casters and towing handle (adds approximately 130 mm to overall height and 10 kg to overall weight)

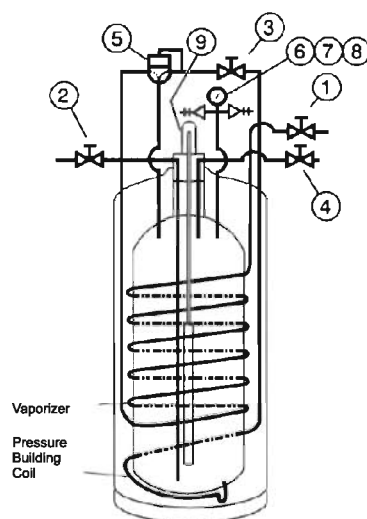
** At 10 bar pressure

*** NER: Nominal Evaporation Rate

**** Tank plus product at saturated pressure 0 bar for O₂, N₂, Ar and triple point for CO₂ and N₂O



The Roto-Cal™ gauge features an easy-to-read dial liquid level indicator with swivel head design.



Item Plumbing Controls and Function

- Gas Use Valve** – Used for gas withdrawal.
- Fill / Liquid Valve** – Used for filling or liquid withdrawal.
- Pressure Control Valve** – Used to turn on / off the pressure control regulator function.
- Vent Valve** – Used to vent pressure.
- Combination Pressure Control Regulator** – Used to automatically control operating pressure.
- Pressure Gauge** – Indicates internal cylinder pressure.
- & 8. Dual Pressure Relief Valves** – Used to limit pressure in the liquid cylinder.
- Liquid Level Gauge** – Used to approximate the liquid contents of the liquid cylinder.