

LABLINE S 22 | MODULAR POINT OF USE

- Bellow single stage
- Purity up to 6.0
- Inlet pressure: 50 bar (725 psi)
- Outlet pressure: 1/3/10 bar 14.5/44/145 psi
- Acetylene version (AD - C₂H₂): P1 = 20 bar (290 psi) P2 = 1,5 bar (21.75 psi)

- ★ Accurate pressure delivery
- ★ Compact design
- ★ 1 inlet / 2 outlets
- ★ Modular concept
- ★ O₂ applications compatible (see technical data)

Special requirements on request



SLS22-EMB-10-G-EPDM-1-MV version



Acetylene version

APPLICATIONS

- A terminal point of use for specialty gas applications in a laboratory or in a workshop.

KEY FEATURES

- Based on the Series 20 platform
- Bellow technology provides a large range of accurate outlet pressures in a compact design.
- Acetylene version also available.
- For use with acetylene, this product must imperatively be installed with a flash back arrestor complying with standard EN 730 located downstream.
- With the inlet shut off valve the regulator is independent from the installation and can be easily removed.



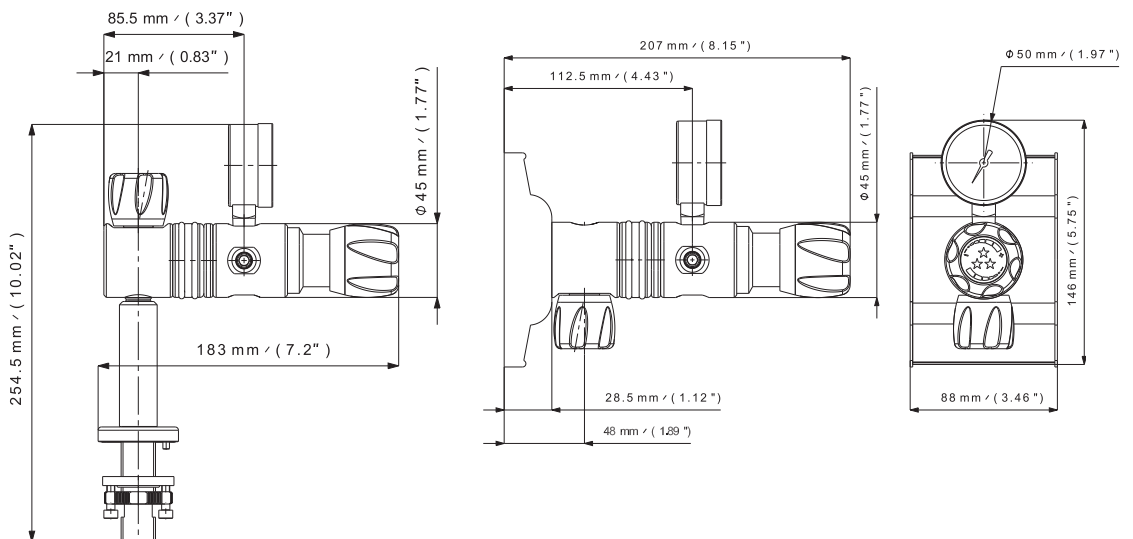
M version w/ 1/4V valve



EMB version w/ MV valve



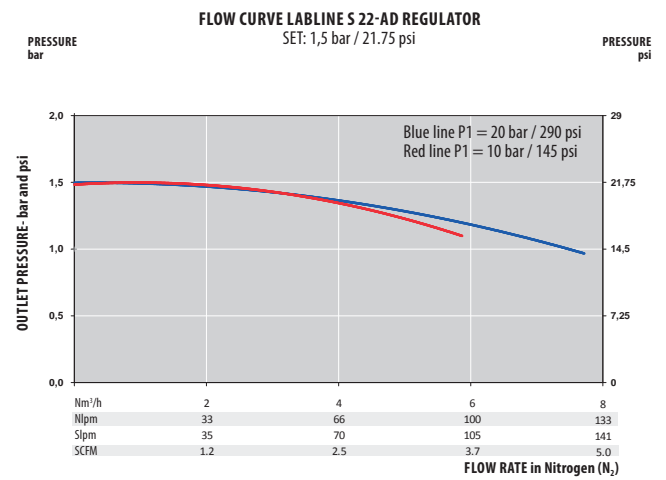
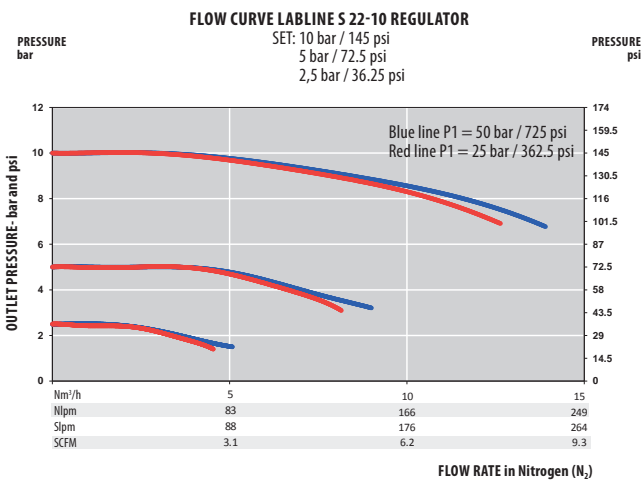
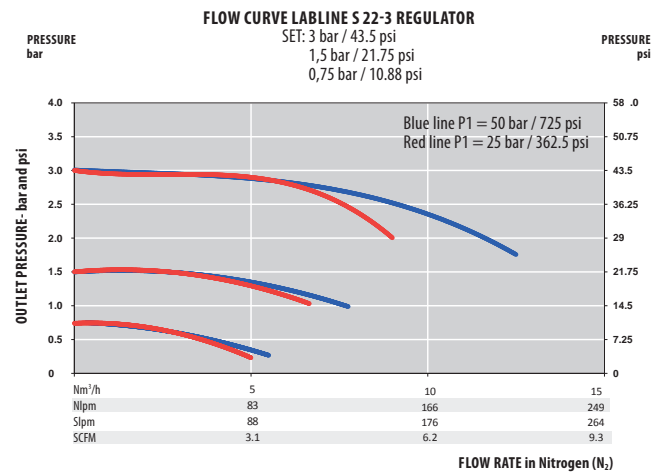
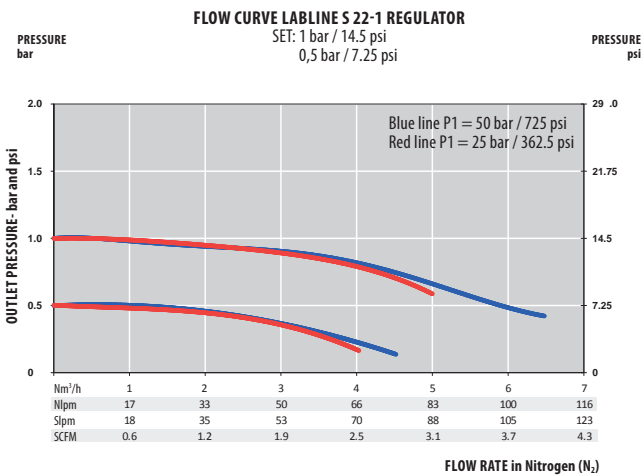
COL version w/ MV valve



SPECIFICATIONS

Female ports	F: G ¼ (inlet-COL version) G ¾ or ¼ NPT (inlet) G ¾ or ¼ NPT (outlet)	Weight	± 1,5 kg ± 3.3 lbs	Inlet pressure	50 bar (725 psi) AD: 20 bar (290 psi)
Seat seal	EPDM	Leak rate	10 ⁻⁸ mbar ℓ/s He	Outlet pressure	1/3/10 bar 14.5/44/145 AD: 1,5 bar (21.75 psi)
O-ring	EPDM - Standard FPM	Temperature range	-20°C to + 60°C -4°F to + 140°F	Nominal Flow	2,2,5/3,5 Nm ³ /h (N ₂) AD: 1 Nm ³ /h
Diaphragm	Hastelloy®	Gauges	Low pressure (M10 x 1 or ¼ NPT)	Oxygen use	inlet pressure ≤ 30 bar max. for brass and stainless steel
Bellow	Bronze or AISI 316L (SS version)				

FLOW CURVES



PRODUCT CONFIGURATOR

Body Material		Version	Outlet Pressure	End Connection	O-ring Material	Gauges	Valve
S	L	S22	EMB	10	G	1	¼V
	Chrome plated brass	With Metal Plate	M	1 bar 14.5 psi	G ¾ - Female (outlet)	With	¼ turn valve
	Stainless steel	With Aluminum stand	EMB	3 bar 44 psi	¼ NPT (outlet)	1	Multi-turn valve
		With pillar*	COL	10 bar 145 psi	Note: inlet G ¼ with COL version		
			Acetylene version	AD			
				1,5 bar 21.75 psi			